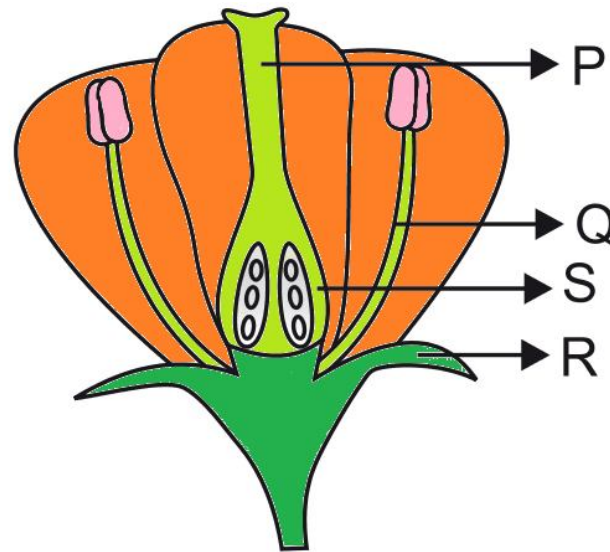


CASE STUDY QUESTION 38

Read the following and answer any four questions from (i) to (v)

For the male gamete to be able to combine with the female gamete, it is necessary that first the pollen grains from the anther of stamen should be carried to the stigma of carpel. The transfer of pollen grains from the anther of a stamen to the stigma of a carpel is called pollination. Thus, pollination is said to take place when pollen grains are carried from the anther to the stigma of the flower. The internal parts for pollination of a flower is shown below with labelled P, Q, R and S.



(i) The correct labeling of the internal part 'P' for pollination of a flower is

(a) Stigma (b) Filament (c) Sepal (d) Ovary

Ans: (a) Stigma

(ii) The correct labeling of the internal part 'Q' for pollination of a flower is

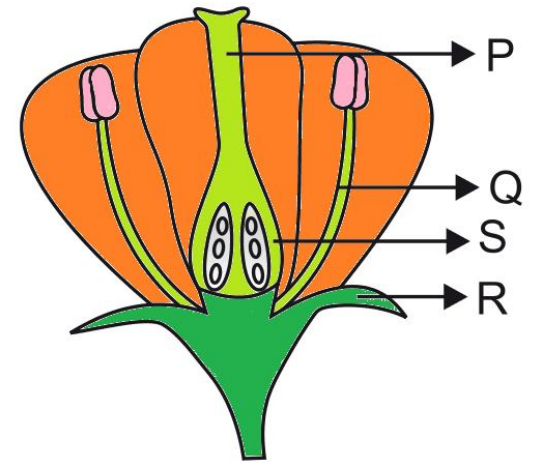
(a) Stigma (b) Filament (c) Sepal (d) Ovary

Ans: (b) Filament

(iii) The correct labeling of the internal part 'R' for pollination of a flower is

(a) Stigma (b) Filament (c) Sepal (d) Ovary

Ans: (c) Sepal



(iv) Which is the male reproductive organ of the plant?

(a) Stigma (b)Stamen (c) Carpel (d) Ovary

Ans: (b)Stamen

(v) Which is the female reproductive organ of the plant?

(a) Stigma (b)Stamen (c) Carpel (d) Ovary

Ans: (c) Carpel

